

IStation Installation Instructions

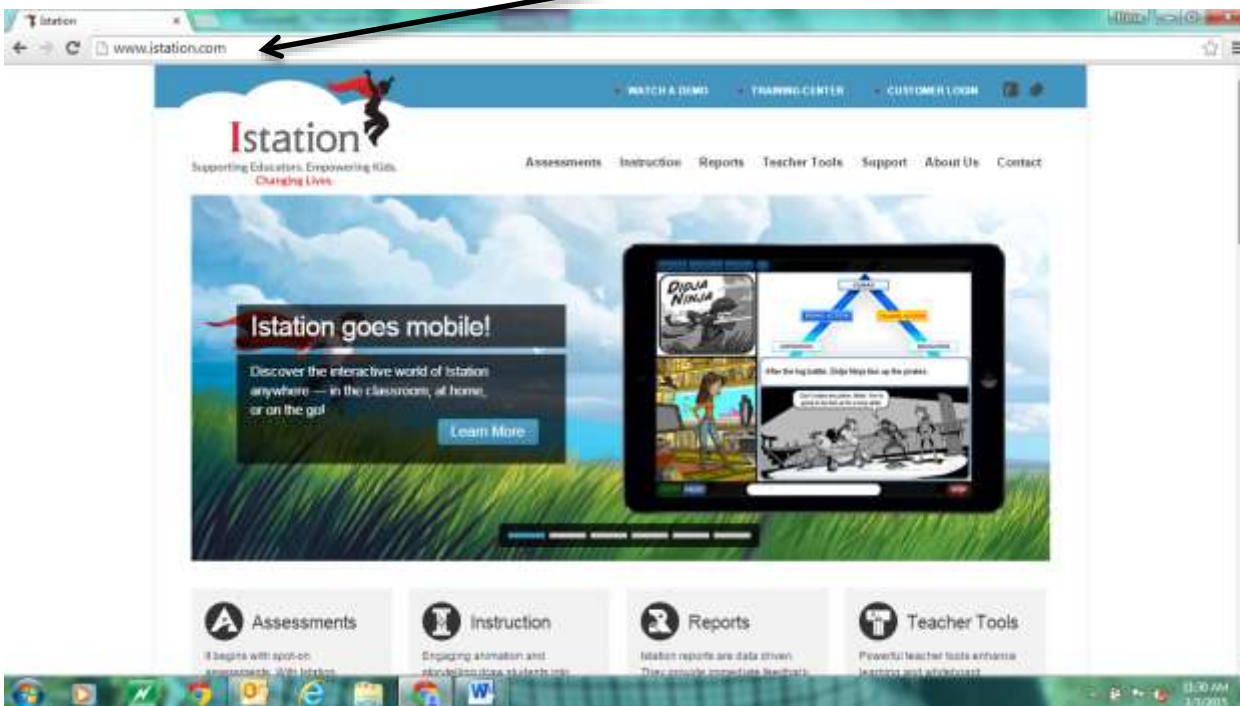
Step 1

Open a new internet search page.



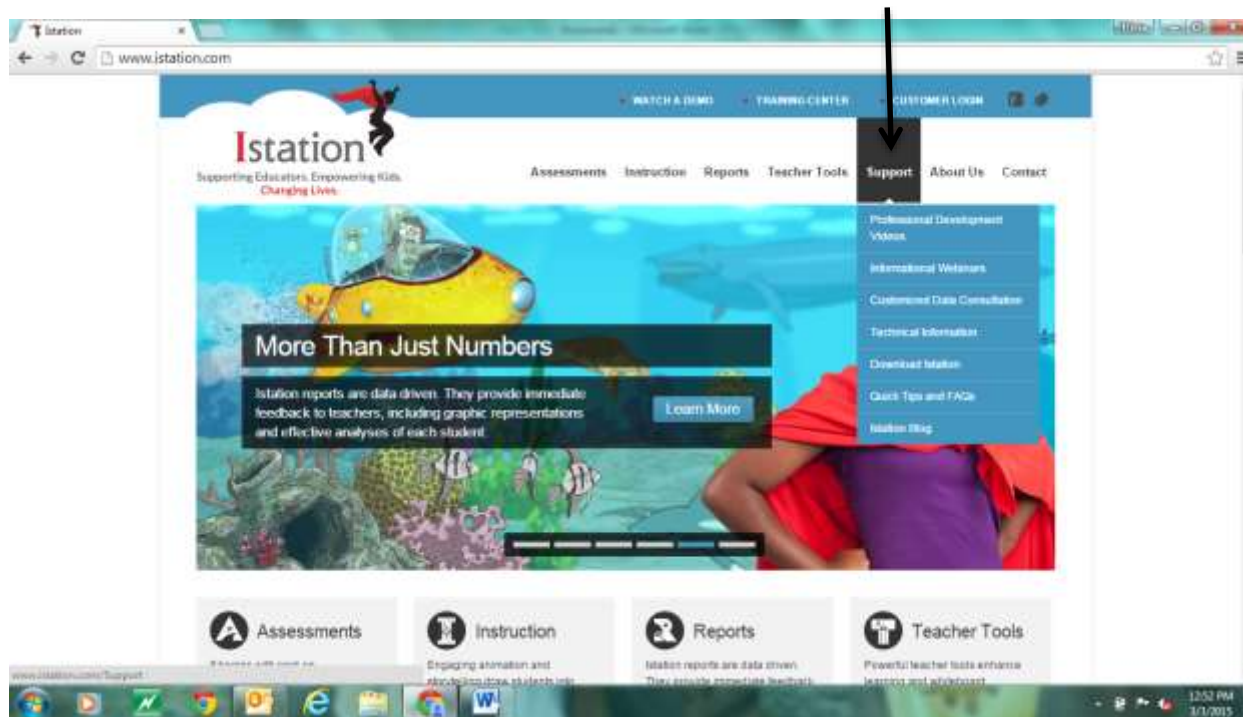
Step 2

In the address bar, type: www.istation.com



Step 3

Click on the "Support" tab at the upper right hand of the screen.



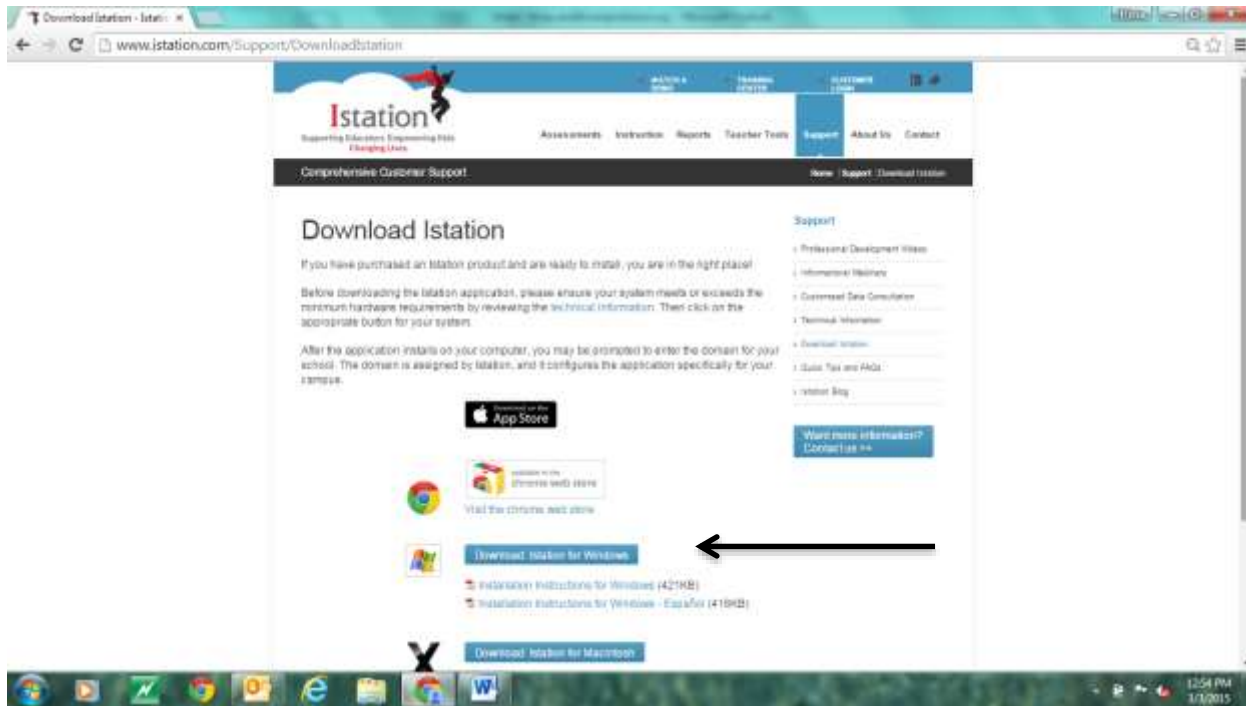
Step 4

Click "Download Istation"



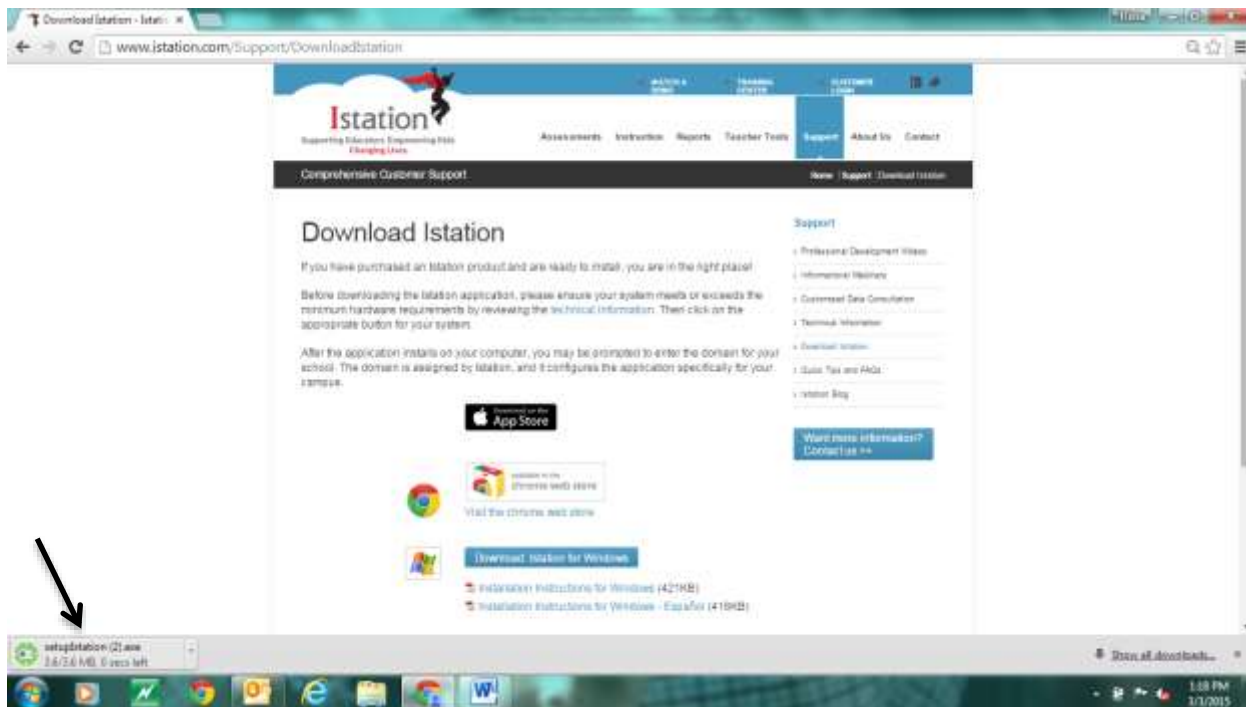
Step 5

From the next screen, choose your operating system



Step 6

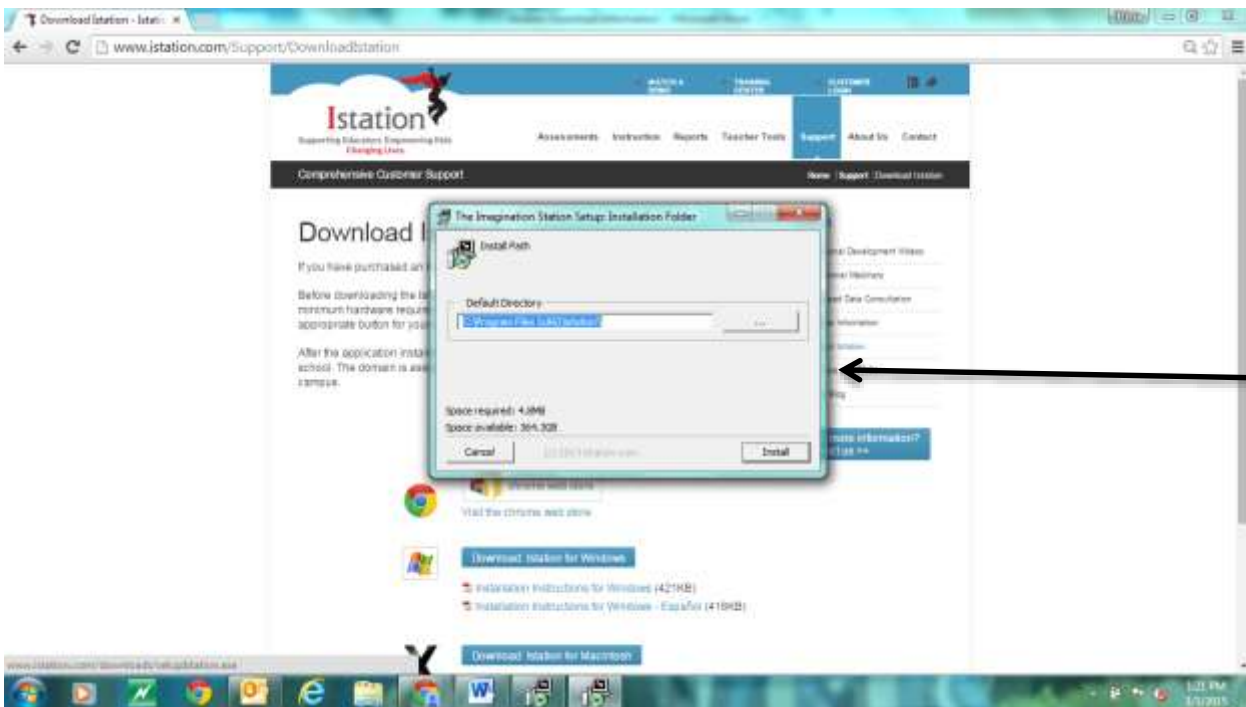
A download bar will appear at the bottom of your screen.



If it does not appear, you may simply get a pop-up screen that asks if the program can make changes to your computer. Click “yes”.

Step 7

This screen should then pop up. Simply click “install” to begin installing the program on your computer. The “default” button should be marked at this point. Then just click continue. Once it is finished installing the program, it will automatically open it on your screen.



Step 8

You will need to select your domain. Please type “**westphalia.westphalia.tx**”. Be sure not to select the “admin.westphalia.westphalia.tx” option. This will prevent your from signing into the program.

